

# CARBON NEGATIVE. FUTURE POSITIVE.

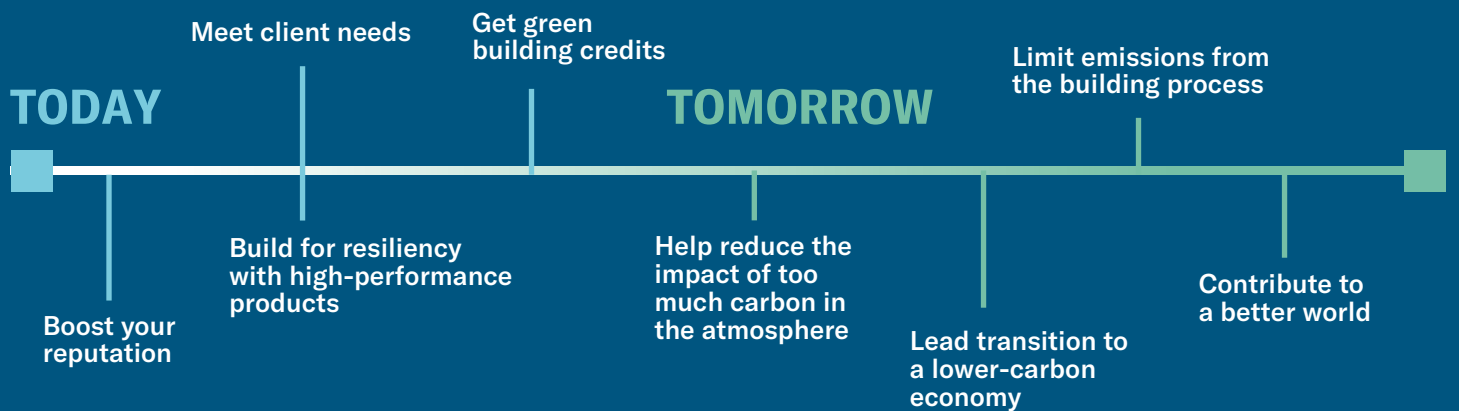
Proven to store more carbon than is released during their life cycles\*, LP® Structural Solutions products\*\* deliver high performance and help you build better for the environment.

## WHAT DOES CARBON NEGATIVE MEAN?

Carbon-negative products store more carbon than is released into the atmosphere during their entire life cycle, from manufacturing to end of life.



## WHY DOES CARBON NEGATIVITY MATTER?



## LP'S SUSTAINABLE MANUFACTURING PROCESS

**100%**

of products are derived from naturally renewable resources

**99.9%**

of particulate matter is captured before it leaves emissions stacks

**99%**

of fiber harvested is used in products or as alternative energy sources

## YOUR PREMIUM SOLUTION

We help you build with the planet in mind without sacrificing resiliency.



Read the full environmental product declarations for LP® Structural Solutions products at [LPCorp.com/Structural-EPD](https://LPCorp.com/Structural-EPD)

\*Based on findings from 2023 product life cycle assessments and the resulting environmental product declarations.

\*\*LP NovaCore® Thermal Insulated Sheathing was excluded from analysis due to being too new to qualify for testing.