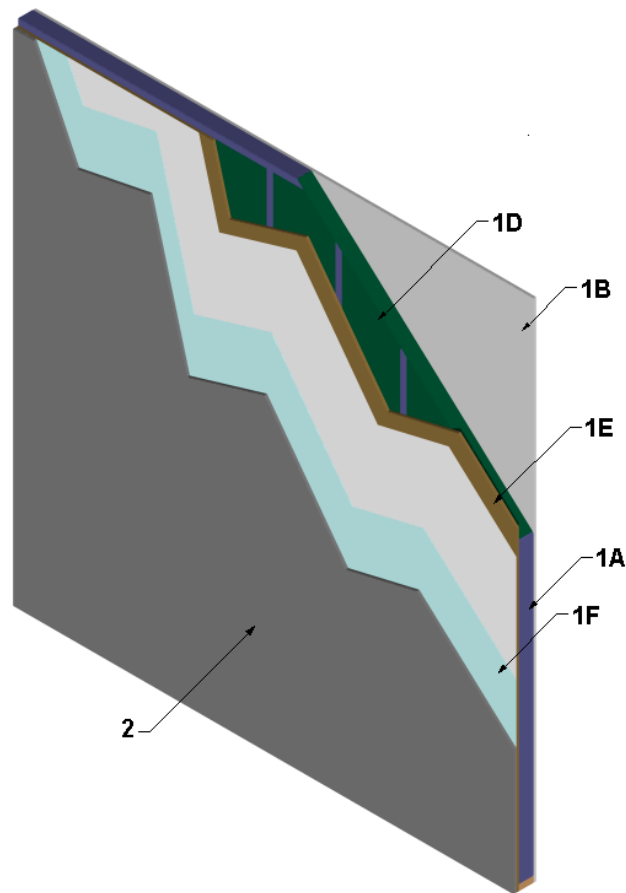


**Louisiana-Pacific Corporation**  
**Design No. LPB/WPPS 60-02**  
**Non-Loadbearing Wall**  
**LP® FlameBlock® Fire-Rated OSB Sheathing and LP® FlameBlock® Plus Fire-Rated OSB Sheathing**  
**ASTM E119**  
**Fire Resistance Rating: 1 Hour**



**1. WALL ASSEMBLY:** Construct a wall assembly using the following elements:

A. **STEEL FRAMING** – Install channel-shaped steel studs spaced a max. of 24 in. on center (oc) and meeting the following requirements:

- Min. 0.033 in. (20 GA) thick
- Min. 5-1/2 in. web
- Min. 1-5/8 in. flange

Use top and bottom steel track with size and gauge requirements equal to the steel studs. Attach these to the floor and ceiling with appropriate mechanical fasteners spaced max. 24 in. oc. Undercut steel studs by 3/8 in. of total wall height and for final installation, fasten only to the top track using 1/2 in. long, No. 8 pan-head steel framing screws.



- B. GYPSUM BOARD – Install one layer of nominal 5/8 in. thick Type X gypsum board, oriented vertically or horizontally. Secure gypsum board using nominal 1 in. long, No. 6 Type S screws spaced max. 8 in. oc.
- C. JOINT TAPE AND COMPOUND (Not Shown) – Install vinyl or casein, dry or premixed joint compound applied to exterior face of gypsum board in two coats to all exposed fastener heads and gypsum board joints. Install min. 2 in. wide paper, plastic, or fiberglass tape embedded in the first layer of compound over joints in gypsum board.
- D. INSULATION – Install Listed, nominal 5-1/2 in. thick, nominal 2.5 pcf density unfaced mineral fiber batt insulation friction fit between the steel framing (Item 1A).
- E. **CERTIFIED MANUFACTURER** – Louisiana-Pacific Corporation

**CERTIFIED PRODUCT** – Wood Sheathing, Fire Retardant Coated Sheathing

**CERTIFIED MODEL** – LP® FlameBlock® Fire-Rated OSB Sheathing or LP® FlameBlock® Plus Fire-Rated OSB Sheathing

Install nominal 48 in. wide x 96 in. tall, nominal 7/16 in. min. thick sheathing with the white side facing out. Install sheathing staggered at gypsum seams. Secure sheathing to steel framing (Item 1A) using 1-7/8 in. long self-drilling drywall screws meeting ASTM C954 spaced 6 in. oc around the perimeter and 12 in. oc in the field.

- F. VAPOR BARRIER (Optional) – Install a vapor barrier compliant with International Building Code requirements or other

applicable regulatory requirements if those requirements are greater. Fasten vapor barrier over the sheathing (Item 1E) using sufficient fasteners to prevent air pockets in the wrap.

- 2. **EXTERIOR WALL COVERING:** Optional for interior fire exposure only or when using Fire Retardant Coated Sheathing (Item 1E) of min. 19/32 in. nominal thickness. Install one of the following items on the exterior side of the wall assembly (Item 1):

- A. STEEL SIDING – Install nominal 38-1/2 in. wide x 10 ft. long, 26 GA steel siding with min. 36 in. coverage. Attached siding to steel framing (Item 1A) over the vapor barrier (Item 1E), using 1-7/8 in. long self-tapping drywall screws, two per panel per stud.
- B. T1-11 SIDING – Install min. 5/16 in. thick plywood or OSB siding per the manufacturer's published installation instructions.
- C. FIBER CEMENT BOARD – Install min. 5/16 in. thick cellulose fiber-reinforced cement board per the manufacturer's published installation instructions.
- D. WOOD STRAND OR WOOD FIBER PANEL – Install min. 5/16 in. thick zinc borate treated wood strand or wood fiber panel (e.g. LP® Smartside®) per the manufacturer's published installation instructions.
- E. WOOD STRAND OR WOOD FIBER LAP SIDING – Install min. 5/16 in. thick zinc borate treated wood strand or wood fiber lap siding (e.g. LP® Smartside®) per the



- manufacturer's published installation instructions.
- F. SOLID WOOD SIDING – Install min. 3/8 in. thick solid wood siding per the manufacturer's published installation instructions.
  - G. MANUFACTURED STONE VENEER – Install min. 5/8 in. thick ICC-ES AC51 compliant manufactured stone veneer in accordance with the approved Code Compliance Research Report and the manufacturer's installation instructions.
  - H. CEMENT PLASTER – THREE COAT (STUCCO) – Install three-coat cement plaster (stucco) over metal lath or wire fabric lath and water resistive barrier as required by the International Building Code (IBC).
  - I. CEMENT PLASTER – ONE COAT (STUCCO) – Install ICC-ES AC11 compliant Omega Products International, Inc., Omega Diamond Wall or Diamond Wall PM Insulating Exterior Stucco Systems, or ICC-

ES AC11 compliant PAREX USA Fiber Reinforced Stucco in accordance with the approved Code Compliance Research Report and the manufacturer's installation instructions.

1. Install a water resistive barrier as required by the IBC for installation over wood based sheathing.
2. Install metal lath or wire fabric lath as required for compliance with the IBC. Fasten lath through the sheathing to the studs with 1-1/4 in. long, 0.125 in. diameter nails having min. head diameters of 0.355 in., or No. 16 GA corrosion-resistant staples having 15/16 in. crowns. Fasteners spaced 6 in. oc on the studs and perimeter framing.
3. Apply stucco coating a min. of 3/8 in. thick in accordance with the approved Code Compliance Research Report and the manufacturer's instructions.